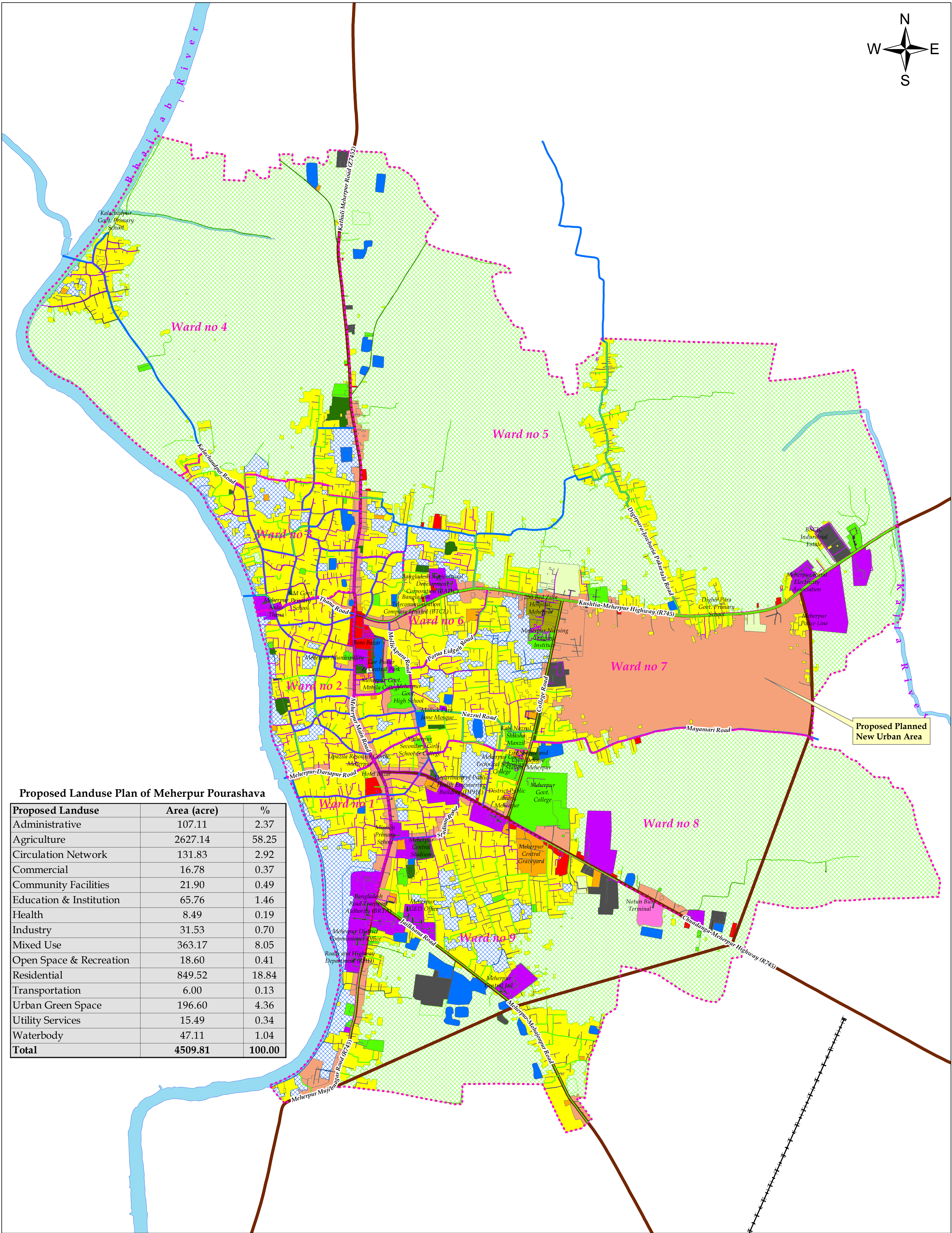
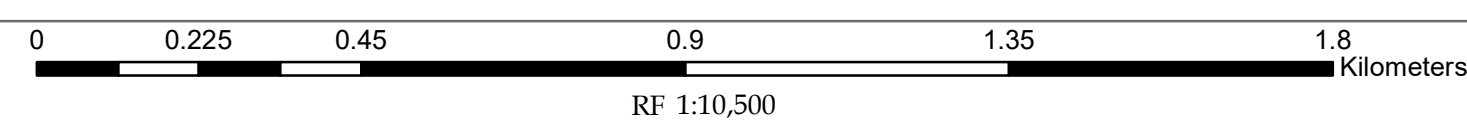
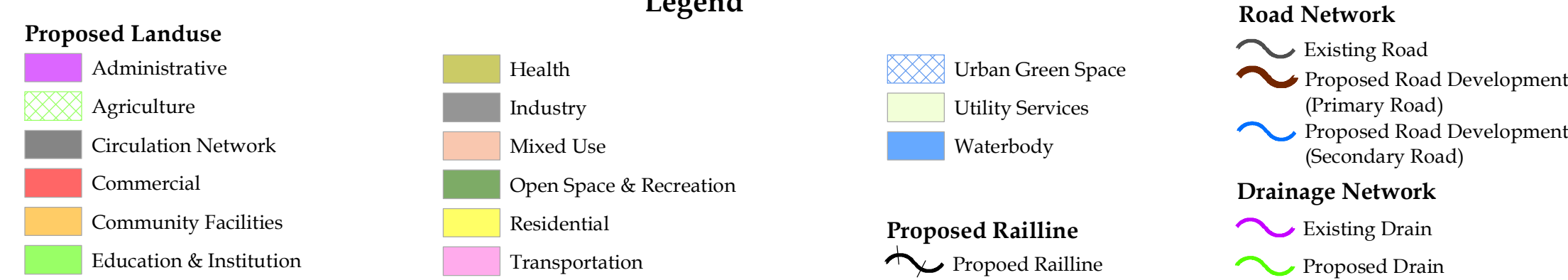


Draft Urban Area Plan of Meherpur Pourashava



Proposed Landuse	Area (acre)	%
Administrative	107.11	2.37
Agriculture	2627.14	58.25
Circulation Network	131.83	2.92
Commercial	16.78	0.37
Community Facilities	21.90	0.49
Education & Institution	65.76	1.46
Health	8.49	0.19
Industry	31.53	0.70
Mixed Use	363.17	8.05
Open Space & Recreation	18.60	0.41
Residential	849.52	18.84
Transportation	6.00	0.13
Urban Green Space	196.60	4.36
Utility Services	15.49	0.34
Waterbody	47.11	1.04
Total	4509.81	100.00



Preparation of Development Plan for Meherpur Zilla Project



Urban Development Directorate
Ministry of Housing and Public Works
82, Segunbagicha, Dhaka - 1000